



essentialnails®
PROFESSIONAL

Gelaze®
UV GEL POLISH



Application & Removal
Step by Step Guide

Gelaze® UV Gel Polish

Gelaze® UV polishes are silky smooth, they go on to the nail like a dream, giving a beautifully intense and creamy smooth depth of colour to natural nails.

Gelaze® is so simple to use, it's hard to believe as the results are so fantastic. But believe us it's true, with Gelaze®, you, your friends and your clients can have beautifully manicured glossy nails all the time, in minutes.

Here are the items you need to complete & remove a beautiful Gelaze® Manicure:



1. Pro UV LED 25 Lamp

2. Gelaze® Top Coat

3. Gelaze® Base Coat

4. Gelaze® Colour Polish

5. Natural Nail File

6. Cuticle Pusher

7. Orange Woodstick (10)

8. Lint Free Pads

9. Sanitiser Spray

10. Cuticle Oil

11. Gel Wipe Off Solution

12. Acetone

13. Foil Removal Wraps

Nail Preparation



Stainless Steel
Cuticle Knife
and Pusher

Step 1.

Push back the cuticle and remove excess residue from the nail plate.



Natural Nail
File - 240 Grit

Step 2.

File and shape the free edge.



Sanitiser
Spray

Step 3.

Apply Sanitiser Spray to a lint free pad to sanitise and remove dust from the nail surface.



Gelaze®
Base Coat

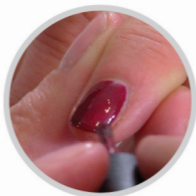
Step 4.

Apply a thin layer of Gelaze® base coat from cuticle to free edge.
*Cure for 45 Secs LED Lamp
1 minute in the UV Lamp.*

Colour Application



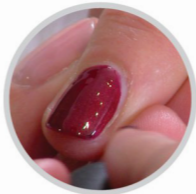
Choose from our gorgeous range of Gelaze® UV Colour Polishes. Visit essentialnails.com/gelaze for more colours.



Step 5.

Apply a thin coat of Gelaze® Colour down one side of the nail and seal, the other side of the nail and seal and down the middle and seal the free edge.

Cure for 45 Secs LED Lamp / 2 minutes in the UV Lamp.



Step 6.

Apply 2nd thin coat of Gelaze® Colour down one side of the nail and seal, the other side of the nail and seal and down the middle and seal the free edge.

Cure for 45 Secs LED Lamp / 2 minutes in the UV Lamp.

Finish



Gelaze®
Top Coat

Step 7.

Apply a thin layer of
Gelaze® Top coat, seal the edges.
Cure for 45 Secs/2 minutes.



Gel
Wipe Off
Solution

Step 8.

Remove the tacky film with
Gel Wipe Off Solution on a lint free pad.



Cuticle
Oil

Step 9.

Apply Cuticle Oil to
rehydrate skin around the nail.



Finished!

You are good to go for up to 14 days.
*Charge at least 50% more for a Gelaze®
Manicure than a regular Manicure.*

Removing Gelaze®



Tip
Remover
(Acetone)



Gelaze®
Removal Wrap

Step 1.

Apply pure Acetone to the white pad
on a Gelaze® Removal Wrap.

Step 2.

Tightly secure all the nails in Gelaze® Removal
Wraps and leave to soak for 10 minutes.



Orange
Wood Stick
(Pack of 10)

Step 3.

Slide the wrap off the nail. Scrape away
excess with an orange wood stick.
Wipe nails to remove residue.



Step 4.

Beautiful undamaged natural nails,
ready for a fresh Gelaze® Manicure.



essentialnails®

PROFESSIONAL

Gelaze®

UV GEL POLISH

Gelaze® Advice

KEEP OUT OF NATURAL LIGHT.

Gelaze®, or any other UV curing polish, for that matter, should never be applied out of doors, or in any strong source of natural light. The sun is a strong source of UV light, and even on a cloudy day your Gelaze® will harden very quickly on the brush and around the top of the bottle.

DAMAGED OR THINNED NAIL PLATE.

If you have thinned or damaged nail plate (due to over filing or over drilling during nail extension application) then we advise that you don't use Gelaze® or any other UV cured polish, as you may feel discomfort for 30 minutes or so following the application and curing.

ALLERGIC REACTION.

If after application you experience a tingling sensation or rash, then you should cease using UV cured nail polish. If you have a history or allergic reactions or sensitivity, then UV cured polishes should be avoided.

For more information about Gelaze® UV Gel Polishes
visit: essentialnails.com/gelaze
call: 01440 820 999 or email: sales@essentialnails.com